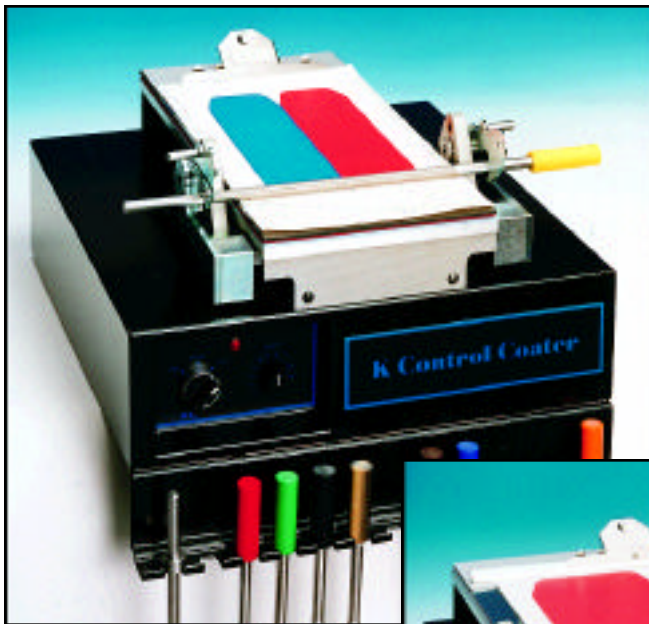
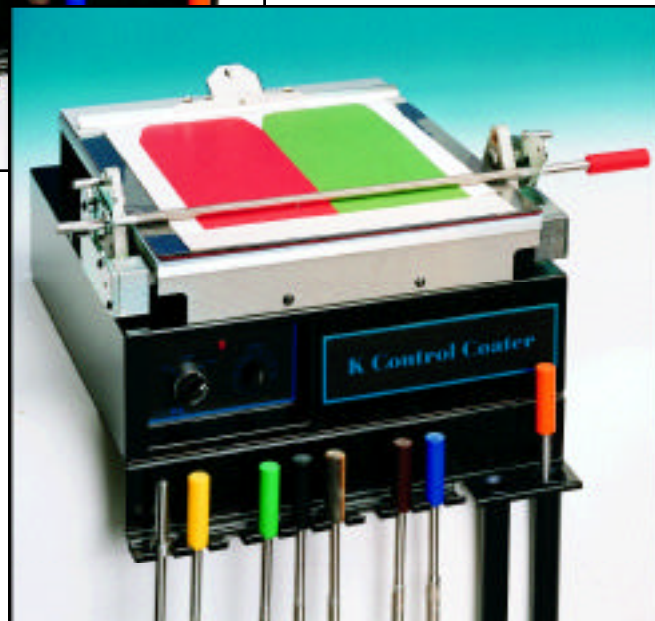


K CONTROL COATER

Widely used for the application of paints, varnishes, adhesives, liquid printing inks and many other surface coatings to produce quick, **accurate & repeatable** samples. These may then be used for quality control and presentation purposes, R & D and computer colour matching data, etc, elements vital to a company's success in the modern world.



◀ MODEL 101



▼ MODEL 202

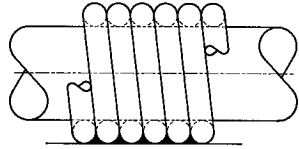
MAIN FEATURES

- Controlled speed and pressure ensure repeatable results
 - Coating by wire wound bars or gap applicators
 - Easy to use, easy to clean
 - Vacuum, magnetic, heated and glass beds available
 - 250mm or 325 x 250mm
 - Multiple coatings in one operation for comparison purposes
 - Standard coating speeds infinitely variable between 2 and 15m/min
- Two models offering coated areas up to 170 x

METER BAR COATING

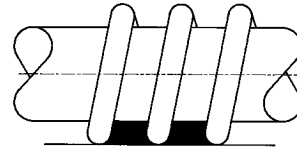
Meter bars provide the simplest method of applying accurate, repeatable layers of surface coatings on to most substrates. A meter bar is produced by winding precision drawn stainless steel wire on to a stainless steel rod resulting in a pattern of identically shaped grooves. These grooves then precisely control the wet film thickness. Close wound bars will produce coating thickness from 4 to 120µm. Higher coating weights up to 500µm can be obtained using spirally wound bars. A three-part Melinex/foam/rubber coating bed is supplied as standard. Vacuum, magnetic, heated and glass beds are also available, as detailed on the back page.

STANDARD K101 AND K202 METER BARS



Close Wound

BAR No.	COLOUR CODE	WIRE DIAMETER		WET FILM DEPOSIT	
		INS	MM	INS	µm
0	White	0.002	0.05	0.00015	4
1	Yellow	0.003	0.08	0.00025	6
2	Red	0.006	0.15	0.0005	12
3	Green	0.012	0.31	0.0010	24
4	Black	0.020	0.51	0.0015	40
5	Horn	0.025	0.64	0.0020	50
6	Orange	0.030	0.76	0.0025	60
7	Brown	0.040	1.00	0.0030	80
8	Blue	0.050	1.27	0.0040	100
9	Tan	0.060	1.50	0.0050	120



Spirally Wound

BAR No.	WIRE DIAMETER		WET FILM DEPOSIT	
	INS	MM	INS	µm
150	0.010	0.25	0.006	150
200	0.014	0.36	0.008	200
300	0.020	0.51	0.012	300
400	0.030	0.76	0.016	400
500	0.040	1.00	0.020	500

Special bars to apply intermediate wet film deposits are manufactured to customer requirements. We stock wire diameters giving the choice of the following deposits (microns) when close wound.
4, 6, 8, 10, 12, 14, 16, 18, 20, 22, 24, 26, 28, 30, 32, 34, 36, 38, 40, 42, 44, 46, 48, 50, 52, 54, 56, 58, 60, 62, 64, 66, 68, 70, 72, 76, 80, 84, 88, 90, 92, 96, 100, 104, 108, 110, 112, 116, 120, 128, 130, 140, 150.

We also manufacture both wired metering bars and plain smoothing bars to fit all laboratory and production width coaters.

COATING AREAS. All dimensions in mm.

MAXIMUM COATING AREA WHEN USING:-

METER BAR COATING WITH STANDARD (THREE-PART) BED

METER BAR COATING WITH GLASS BED

METER BAR COATING WITH VACUUM BED TYPE A

METER BAR COATING WITH VACUUM BED TYPE B

METER BAR COATING WITH MAGNETIC BED

METER BAR COATING WITH HEATED BED

MICROMETER ADJUSTABLE APPLICATOR

BIRD APPLICATOR

CUBE FILM APPLICATOR

4-SIDED APPLICATOR

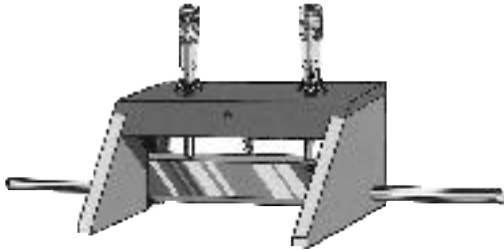
K WEDGE BAR

MODEL NO.	
101	202
170 x 250	325 x 250
170 x 250	325 x 250
140 x 250	290 x 250
150 x 250	300 x 250
150 x 250	300 x 250
170 x 250	325 x 250
100 x 250	200 x 250
100 x 250	100 x 250
41 x 250	41 x 250
60 x 250	60 x 250
100 x 250	200 x 250

GAP APPLICATORS

A range of adjustable or fixed gap applicators is available for use with the Control Coater. These are widely used for higher viscosity and thixotropic materials and for high coat weights.

MICROMETER ADJUSTABLE APPLICATOR



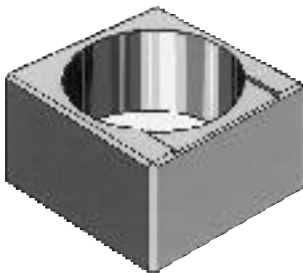
This applicator incorporates an adjustable spreading blade with micrometers to accurately set the substrate/blade gap from 0 - 10mm in 10 μm increments, providing a most versatile tool. It gives a coating width of 100 mm or 200mm and produces a wet film thickness equal to the gap setting.

BIRD APPLICATOR

Precision ground all over, these stainless steel applicators provide a coating width of 100mm and are available with gap sizes of 25, 50, 75, 100, 150 or 200 μm . These Bird applicators produce a wet film thickness equal to half of the gap size.



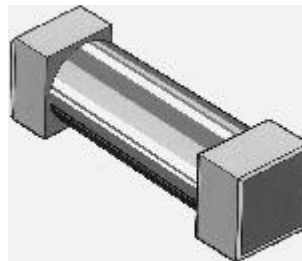
CUBE FILM APPLICATOR



Made of precision ground stainless steel, the cube film applicator provides a coating width of 41mm. Each applicator is supplied with two gap sizes:- 50 and 100 μm or 150 and 200 μm . These applicators produce a wet film thickness equal to half of the gap size.

4-SIDED APPLICATOR

This device enables the user to coat four separate film thicknesses with a single applicator. Providing a coating width of 60mm, the 4-sided applicator is supplied with gap sizes of 30, 60, 90 and 120 μm . It produces a wet film thickness equal to half of the gap size.



K WEDGE BAR



The K Wedge Bar is an economical form of fixed gap applicator, produced by winding wire on to a stainless steel rod, as illustrated. Gaps between 50 μm and 1500 μm are available in 50 μm steps. The wet film thickness is approximately equal to gap size and a coating width of 100mm or 200mm is produced.

SPECIAL PURPOSE COATING BEDS



Shown above are four special purpose beds, each of which can be easily added to the basic machine using four fixing screws to ensure the best possible results for a range of applications:-

VACUUM BEDS – A & B

TYPE A. Recommended when coating on to delicate and stretchy substrates (eg aluminium foil, polythene etc). A rubber faced bed connected to a vacuum pump (optional) holds the material perfectly flat. Vacuum is applied from the edges of the substrate only.

TYPE B. A smooth aluminium faced bed with vacuum applied via multiple holes over the entire surface. Suitable for more rigid substrates. Especially recommended when coating on to paint charts with gap applicators.

MAGNETIC BED – C

For use when coating on to magnetic substrates (eg tin plate) to ensure a flat surface. Permanent magnets are used and are operated by an on/off key.

HEATED BED – D

For use when applying coatings which require heating (eg hot melts, electrographic inks). The bed has a smooth aluminium face which can be heated up to 200 degrees and is set by a digital temperature controller.

GLASS BED (NOT ILLUSTRATED)

This provides a perfectly flat surface which is very easily cleaned. It is especially recommended for use with gap applicators which require a hard surface.

TO ORDER Please specify:

1. Machine size - Model 101 or 202
2. Type of drive - Electric or air
3. Coating heads and accessories - Refer to price list
4. Services available - Power at 200/250 or 100/120 volts, 50 or 60 Hz, Single Phase or Compressed air at 5.5 Bar (80 psi)

For more information contact...

The logo for R K Print-Coat Instruments Ltd, featuring the letters 'RK' in a stylized, bold, blue font with a white outline.

R K Print-Coat Instruments Ltd.
Litlington, Royston, Herts, SG8 0QZ UK
Tel. +44 (0)1763 852187
Fax. +44 (0)1763 852502
email. sales@rkprint.com
www.rkprint.com